



# Villanova BOB Series

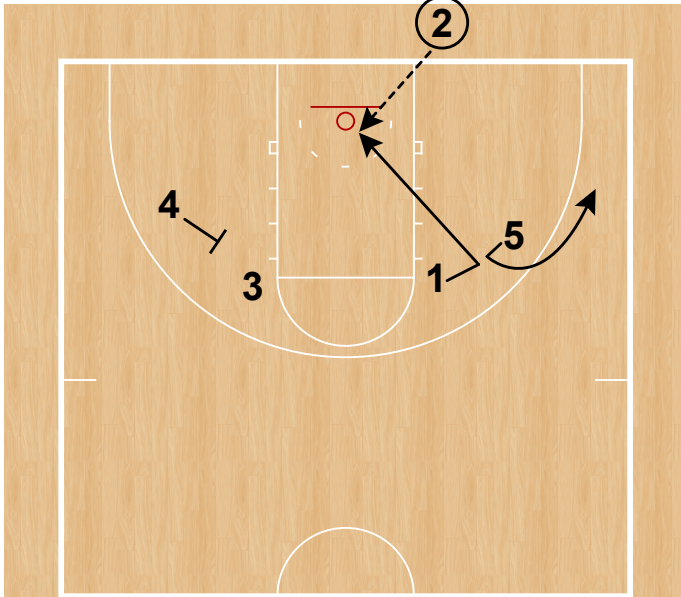


## Table of Contents

1.	Sets	2
1.1	Backdoor Cut	2
1.2	Backdoor Cut - Hand Off	3
1.3	BLOB Double	4
1.4	BLOB X	5
1.5	Lob	6
1.6	Out	7
1.7	Weak	8
1.8	Weak Double	9
1.9	Weak Double (Slip)	10

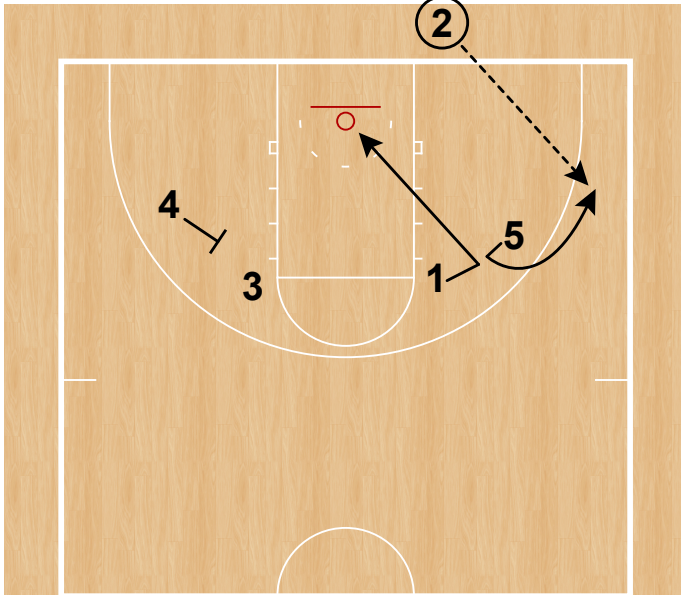
# Villanova BOB Series

Backdoor Cut  
Baseline out of Bounds

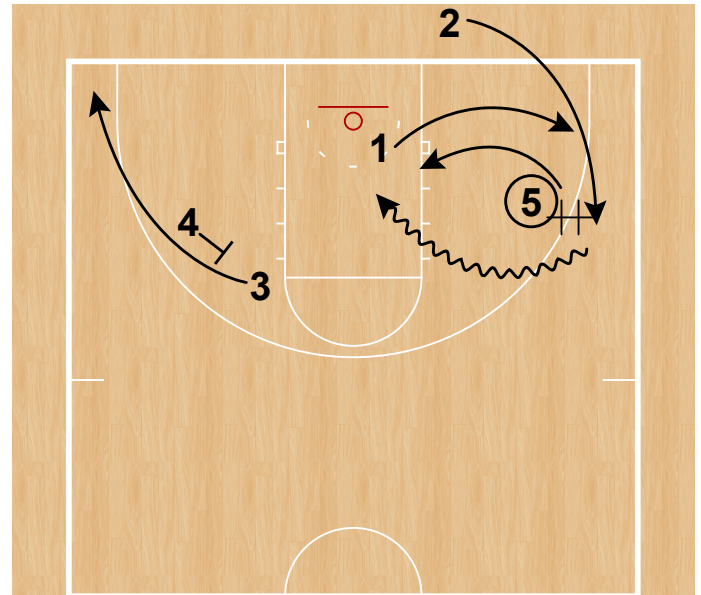


# Villanova BOB Series

Backdoor Cut - Hand Off  
Baseline out of Bounds

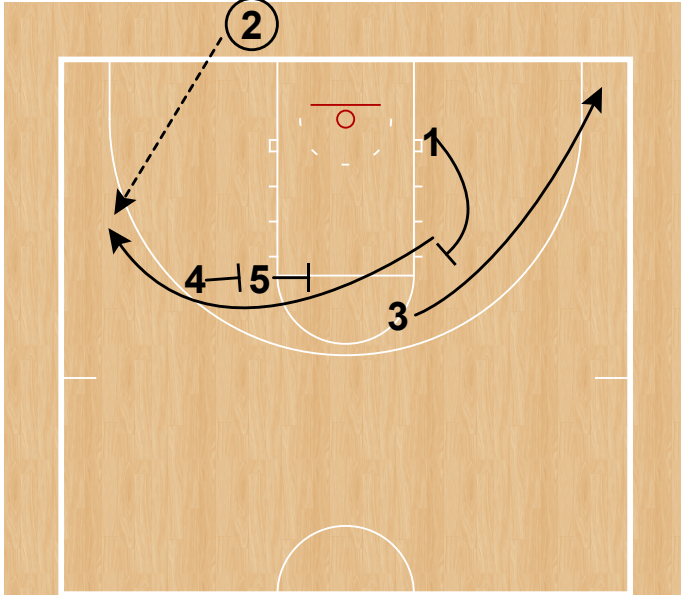


Backdoor Cut - Hand Off  
Baseline out of Bounds



# Villanova BOB Series

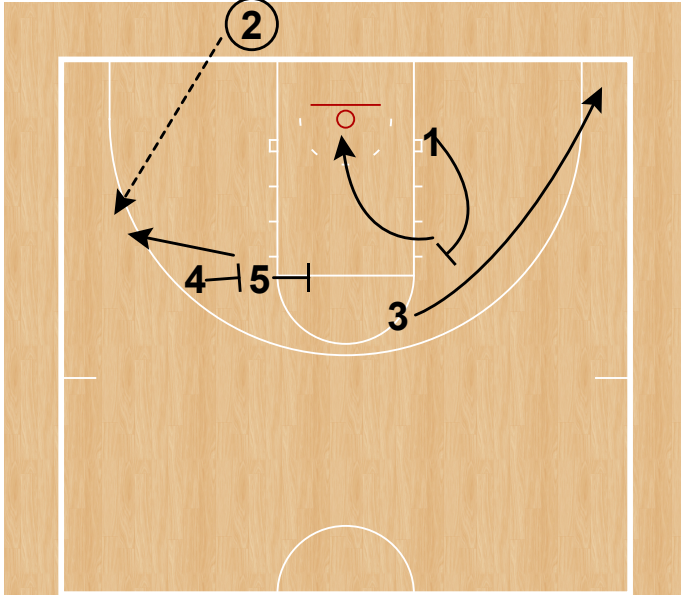
BLOB Double  
Baseline out of Bounds



1 sets a backscreen for 3 who cuts to the corner, and then cuts off 4 & 5 for a shot.

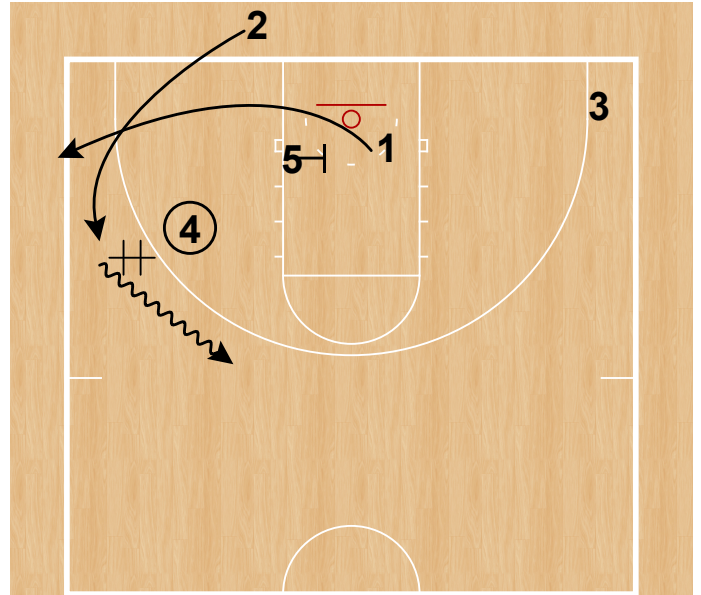
# Villanova BOB Series

BLOB X  
Baseline out of Bounds



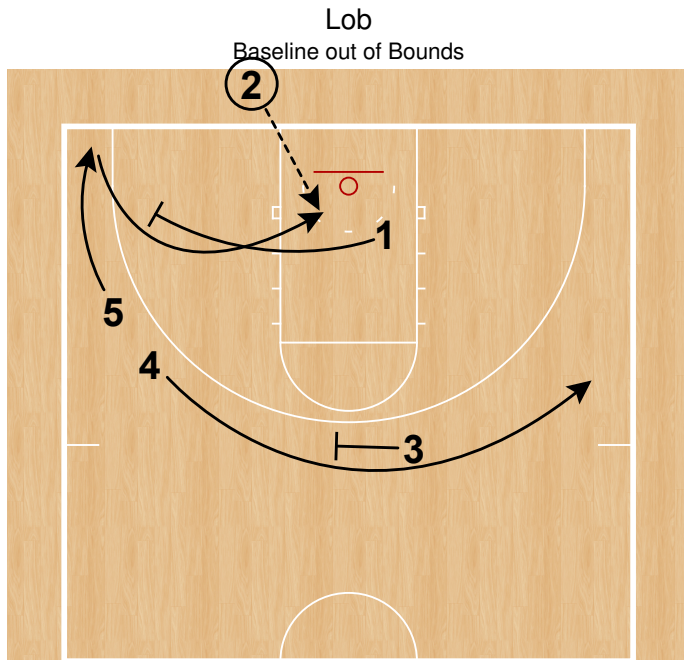
1 sets a backscreen for 3 who cuts to the corner, and then cuts off 4 & 5 for a shot.

BLOB X  
Baseline out of Bounds



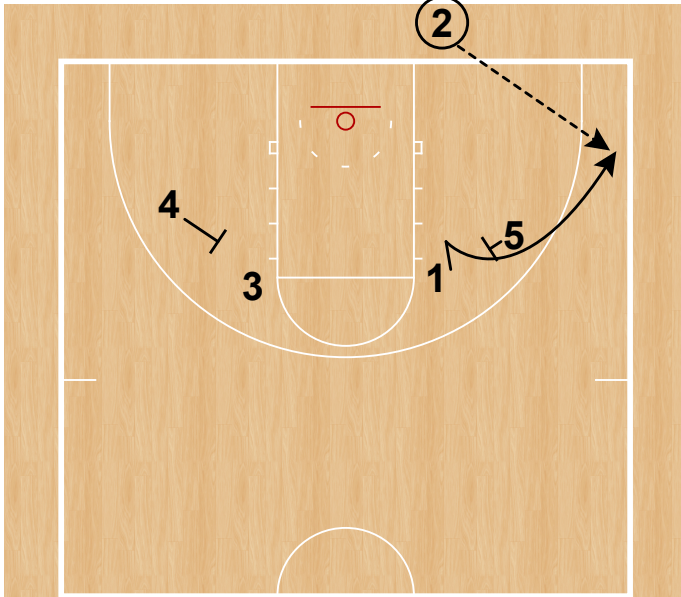
4 executes a DHO with 2, 5 screens 1.

# Villanova BOB Series



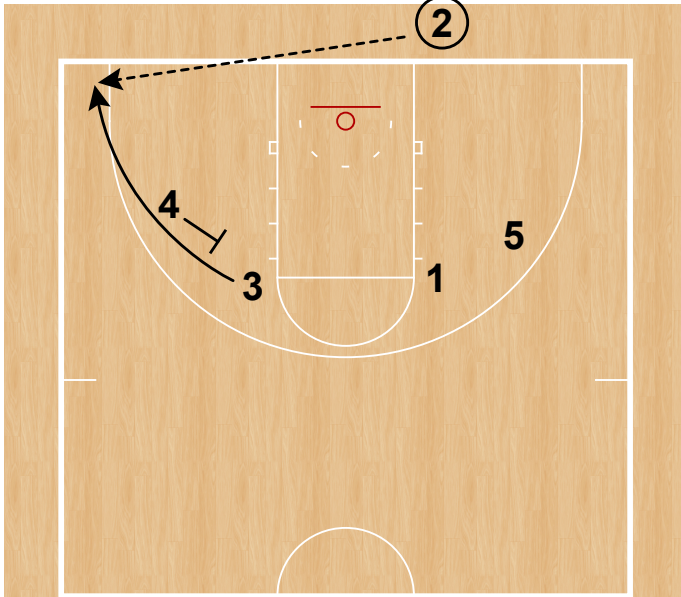
# Villanova BOB Series

Out  
Baseline out of Bounds



# Villanova BOB Series

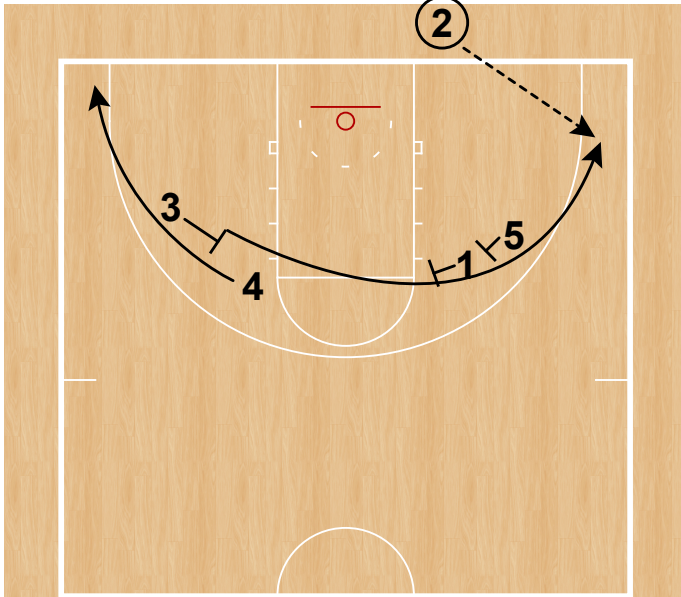
Weak  
Baseline out of Bounds





# Villanova BOB Series

Weak Double  
Baseline out of Bounds



# Villanova BOB Series

Weak Double (Slip)  
Baseline out of Bounds

