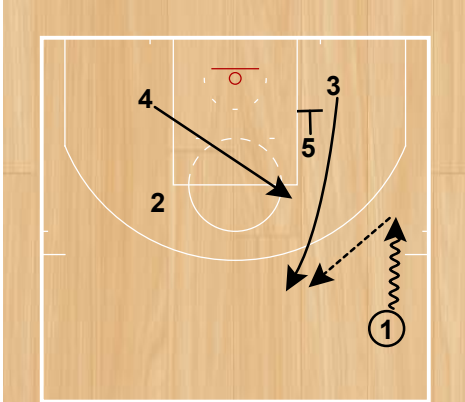




San Antonio Spurs

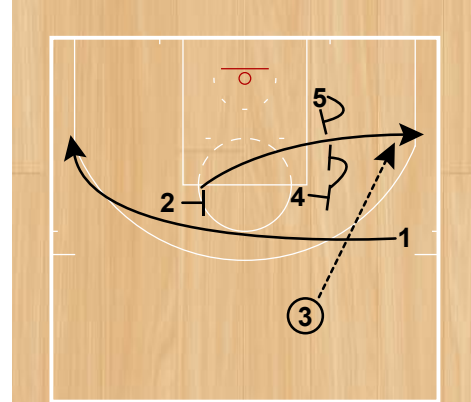
Half Court Sets

Set 1 (Zipper Iverson Elevator)
14-15



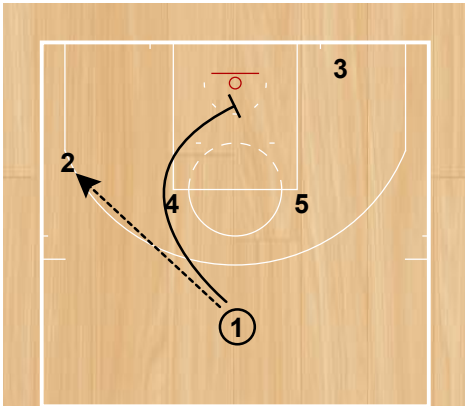
Set 1: 3 executes a Zipper Cut and 1 passes to 3. 4 flashes to elbow.

Set 1 (Zipper Iverson Elevator)
14-15



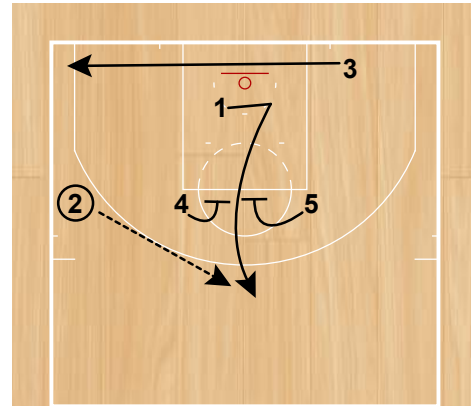
1 runs off an iverson cut off 4/2 screens. 2 then leaks out and sprints to the wing through 4/5 Elevator Doors. 3 passes to 2.

Cross Elevator
14-15



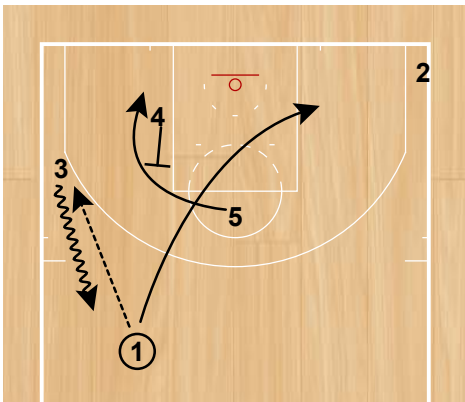
1 (Patty Mills) passes to 2 on the wing and clears through down the lane to set a cross screen for 3.

Cross Elevator
14-15



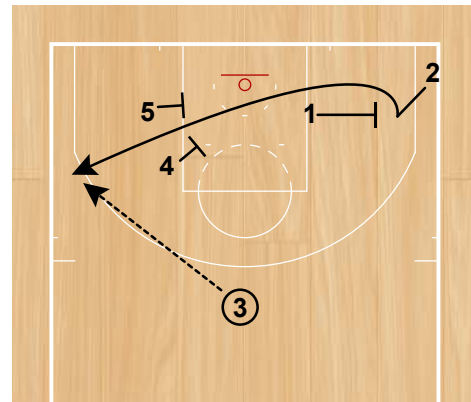
Instead of screening, 1 pauses for a second to hold the defense and sprints up through 4/5 Elevator Doors. 2 passes to 1.

Elevator
14-15



1 passes to 3 and cuts through. 5 cuts off screen from 4. 3 dribbles to top of the key.

Elevator
14-15



1 sets a cross screen for 2 who cuts off it and sprints through elevator doors.